

Digital duplicator

# RISO SF5030 **II** E

**130** ppm High-speed printing

**300x600** dpi High-resolution

**A4** paper size

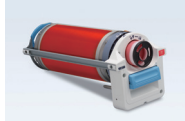
## Speed Forward Edition II



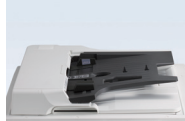
An upgraded print system for use in various settings

# RISO SF5030 E

## Optional Accessories



**RISO FII Type Drum**  
Enables colour printing.  
(Case included)



**RISO Auto Document Feeder VII**  
Scans multiple documents automatically.



**RISO Job Separator IV; NIII**  
Enables easy separation of printed sheets by inserting tape strips.



**Card Feed Kit**  
Compatible with paper weight 100 gsm to 400 gsm.  
\*Please contact a RISO sales representative for the kinds of paper that may be used.



**RISO Stand D Type III**  
Deluxe and with doors for convenient storage with a neat appearance.



**RISO Stand N Type III**  
Sturdy open-front stand also offers convenient storage of consumables.

- IC Card Reader Activation Kit RG
- RISO Network Kit S10
- RISO Printer driver for Macintosh
- Envelope Feed Kit  
Compatible with paper weights 50 gsm to 120 gsm.

## RISO iQualitySystem™



The RISO i Quality mark indicates a RISO product compatible with the RISO i Quality System.



**RISO INK FII Type Colour (1000 ml)**



**RISO MASTER FII Type (A4: 295 sheets)**



**RISO INK FII Type Black (1000 ml)**

## Specifications

<b>Master Making/Printing Methods</b>		High-speed digital master-making/Fully automatic printing
<b>Original Type</b>		Book or sheet
<b>Master Making Time*1</b>	<b>Quick Master Making mode</b>	Approx. 20 seconds (A4, short-edge feed)
	<b>Normal Master Making mode</b>	Approx. 22 seconds (A4, short-edge feed)
<b>Resolution</b>	<b>Scanning</b>	600 dpi × 600 dpi
	<b>Printing</b>	300 dpi × 600 dpi, Quick Master Making mode: 300 dpi × 400 dpi
<b>Maximum Scanning Area</b>		297 mm × 432 mm
<b>Print Paper Weight</b>		46 gsm to 157 gsm
<b>Print Paper Size</b>		100 mm × 148 mm to 310 mm × 432 mm
<b>Maximum Printing Area</b>		210 mm × 290 mm
<b>Paper Feed Tray Stacking Capacity</b>		1000 sheets*2, stacking height of 110 mm or lower
<b>Paper Receiving Tray Stacking Capacity</b>		1000 sheets*2, stacking height of 110 mm or lower
<b>Print Speed</b>		5 levels: 60, 80, 100, 120 and 130 ppm
<b>Print Position Adjustment</b>		Horizontal: ±15 mm, Vertical: ±10 mm
<b>Image Processing Mode</b>		Line, Photo, Duo, Pencil
<b>Print Reproduction Ratio</b>		Zoom: (50% to 200%), 100% reduction ratio, 3 levels of enlargement (141%, 122%, 116%), 4 levels of reduction (94%, 87%, 82%, 71%)
<b>User Interface</b>		LCD panel
<b>Functions</b>		Original Scanning mode, Scanning Level, Enlargement/Reproduction, Dot Process, 2-Up, Book, Ink Saving, Quick Master Making, ADF-Semi-Auto*3, Speed, Density, Print Position, Program A/B, D-feed check, Slip sheet sorting, Job Separation*4, Idling, Confidential, Meter Display, Count Report Output, Proof, Direct Printing, USB Flash-via-Printing, Paper Memory Print, Auto Sleep Setting, Auto Power-OFF Setting, ECO mode, RISO iQuality System
<b>PC Interface</b>		USB2.0, Ethernet:100BASE-TX, 10BASE-T*5
<b>Ink Supply</b>		Full automatic (1000 ml/cartridge)
<b>Master Supply/Disposal</b>		Full automatic (A4: approx. 295 sheets per roll)/Disposal capacity: approx. 100 sheets
<b>Power Source</b>		AC 100-120 V 3.4 A, AC 220-240 V 1.6 A, 50-60 Hz
<b>Power Consumption</b>	<b>Standard</b>	Max.: 300 W, Ready: 20 W or lower, Sleep: 5 W or lower, Power-OFF: 0.5 W or lower
	<b>Optional Accessories Connected*6</b>	Max.: 315 W, Ready: 30 W or lower, Sleep: 10 W or lower, Power-OFF: 0.5 W or lower
<b>Dimensions (W×D×H)</b>	<b>In use</b>	1415 mm × 670 mm*7 × 1065 mm*8
	<b>In storage</b>	780 mm × 670 mm*7 × 1065 mm*8
<b>Required Space (W×D×H)</b>		1415 mm × 1240 mm × 1515 mm*8
<b>Weight</b>		100 kg*9

\*1 Measurement value when set to 100% reproduction ratio.

\*2 When using the following weight of paper: 64 gsm to 80 gsm

\*3 Usable when the optional auto document feeder is installed.

\*4 Usable when the optional Job Separator is installed.

\*5 RISO Network Kit S10 (optional) is required for connecting to the network.

\*6 When all the following optional accessories are installed, Auto Document Feeder, Job Separator, IC Card Reader.

\*7 The depth does not include the stabilisers for the dedicated stand.

\*8 The height includes the dedicated stand.

\*9 The weight does not include the ink, master roll, and stand.

Notes: The specifications are subject to change without prior notice.

and RISO, RISO i Quality System and RISO i Quality mark are trademarks or registered trademarks of RISO KAGAKU CORPORATION in the United States and other countries. Other corporate names and/or trademarks are either registered trademarks or trademarks of each company, respectively.  
Copyright ©2019 RISO KAGAKU CORPORATION. All rights reserved.



**RISO KAGAKU CORPORATION**  
5-34-7 Shiba, Minato-ku, Tokyo 108-8385 Japan  
<https://www.riso.com/>

For more details please contact: